



CHANNEL JUMPER
FINEST QUALITY SINCE 1976

2022 Look Book







License No.
GBoo11 - 1

OUR WOOL STARTS ITS LIFE UPON THE FELLS AND DOWNS OF THE BRITISH COUNTRYSIDE.

The garments we produce use Worsted wool which is hand graded for the finest quality and fibre thickness. This results in a sustainable, completely natural garment.

Our knitwear uses 100% certified British wool ensuring a natural, sustainable and biodegradable garment that lasts for many years. The sheep from which our wool is sourced are sheared by licensed and trained professionals that uphold animal welfare and safety.

The Traditional Guernsey

THE TRADITIONAL GUERNSEY SWEATER HAS A STORY TO TELL.

The rib at the top of the sleeve is said to represent a sailing ship's rope ladder in the rigging, the raised seam across the shoulder a rope, and the garter stitch panel represents waves breaking upon the beach.

The traditional Guernsey sweater was originally a local fisherman's working garment, hence the diamond under the arm for ease of movement and extra strength. It is knitted with close stitches from tightly twisted wool and this guarantees a long-lasting garment that keeps its shape. Traditional Guernsey sweaters were knitted by the womenfolk of the

fishing and farming families of the islands, when many earned their living from the sea or the land. The distinctive pattern was handed down from generation to generation and the knitting skills passed on from mother to daughter.

Burhou

The Original
Guernsey Jumper
page 6

Casquets

Fine-Striped
Guernsey Jumper
page 12

Ellis

Half Fine-Striped
Guernsey Jumper
page 16

Puffin

The Wide-Striped
Guernsey Jumper
page 22





Burhou

The Original
Guernsey Jumper

CJ01
Available in Sizes 34-56

Burhou
Oatmeal
CJ014

2022 Collection



Dark Navy - CJo102



Aran - CJo100



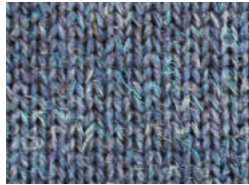
Burgundy - CJo122



Cassat - CJo126



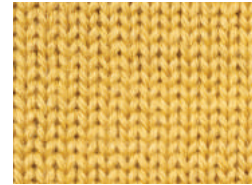
Cinnamon - CJo124



Denim - CJo109



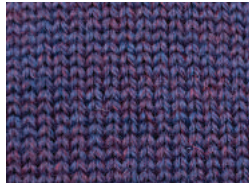
Derby Tweed - CJo103



Sunflower - CJo128



Harvest - CJo115



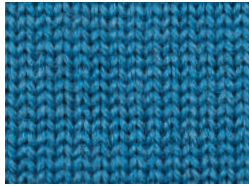
Heather - CJo107



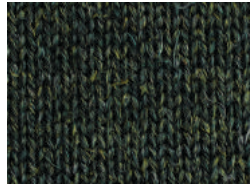
Humbug - CJo116



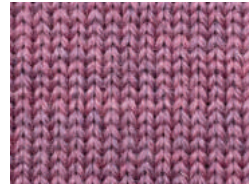
Smoke - CJo129



King Fisher - CJo118



Loden Green - CJo123



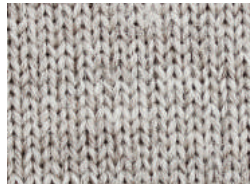
Lupin - CJo112



Kielder - CJo131



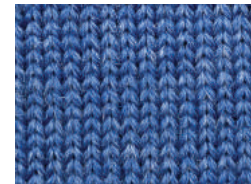
Mallard - CJo120



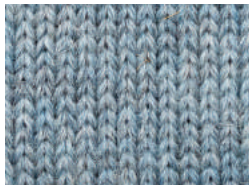
Oatmeal - CJo114



Dark Grey Natural - CJo132



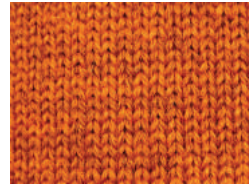
Indigo - CJo127



Summer Storm - CJo119



Foxglove - CJo125



Burnt Orange - CJo110

Base Code: CJo1
Available in Sizes 34-56



Burhou
Cinnamon
CJo124



Burhou
Kingfisher
CJo118



Burhou
Mallard
CJ0120



Burhou
Cassat
CJ0126



Casquets

The Fine-Striped Guernsey Jumper

CJ13

Available in Sizes 34-50

Casquets

Dark Navy / Cinnamon

CJ1304



Detailing on Shoulders and Cuffs



Casquets

Shell / Lupin

CJ1303

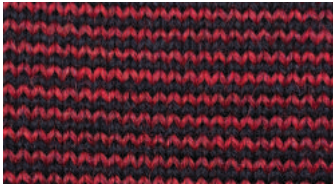


Casquets

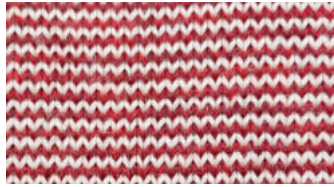
Harvest / Dark Navy

CJ1305

2022 Collection



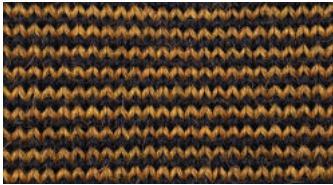
Dark Navy / Cassat - CJ1302



Aran / Cassat - CJ1311



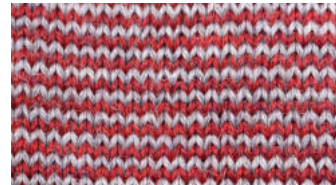
Dark Navy / Cinnamon - CJ1304



Harvest / Dark Navy - CJ1305



Smoke / Denim - CJ1307



Smoke / Cassat - CJ1309

Base Code: CJ13
Available in Sizes 34-50



Ellis

Half Fine Striped Jumper

CJ12

Available in Sizes 34-50

Ellis

Harvest / Summer Storm

CJ1201

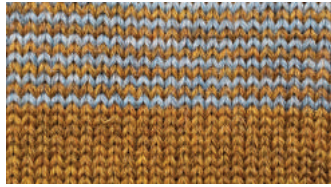


Detailing on Shoulders and Cuffs

2022 Collection



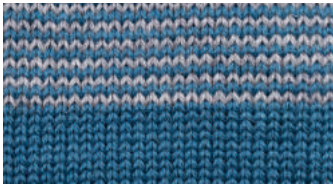
Aran / Cassat - CJ1202



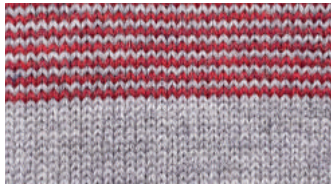
Harvest / Summer Storm - CJ1201



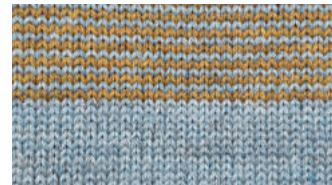
Oatmeal / Denim - CJ1214



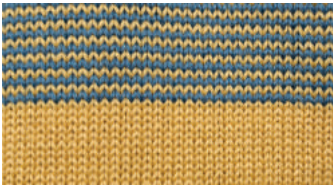
Kingfisher / Smoke - CJ1204



Smoke / Cassat - CJ1211



Summer Storm / Harvest - CJ1205



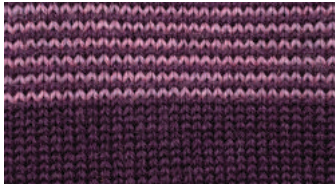
Sunflower / Kingfisher - CJ1206



Dark Navy / Summer Storm - CJ1207



Smoke / Kingfisher - CJ1208



Foxglove / Lupin- CJ1209



Dark Navy / Burnt Orange- CJ1213



Dark Grey Natural / Cassat- CJ1215



Base Code. CJ12
Available in Sizes 34-50



Ellis

Sunflower / Kingfisher

CJ1206



Ellis

Smoke / Kingfisher

CJ1208



Ellis

Dark Grey Natural / Cassat

CJ1215



Ellis

Dark Navy / Summer Storm

CJ1207



Puffin

The Wide-Striped
Guernsey Jumper

CJ14
Available in Sizes 34-54

Puffin
Aran / Navy
CJ1402



Puffin
Burgundy / Aran
CJ1405



Puffin
Kielder / Smoke
CJ1403

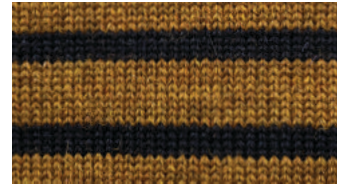
2022 Collection



Indigo / Aran - CJ1426



Oatmeal / Mallard - CJ1406



Harvest / Navy - CJ1408



Aran / Kingfisher - CJ1401



Smoke / Sunflower - CJ1411



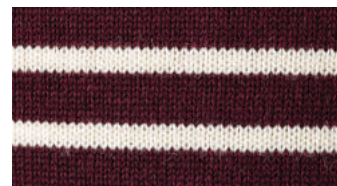
Aran / Dark Navy - CJ1402



Kielder / Smoke - CJ1403



Aran / Cassat - CJ1427



Burgundy / Aran - CJ1405



Navy / Aran - CJ1425



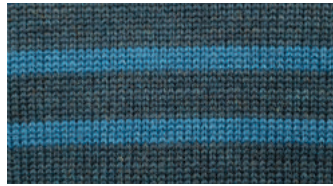
Foxglove / Smoke - CJ1409



Mallard / Smoke - CJ1410



Smoke / Summer Storm - CJ1412



Mallard / Kingfisher - CJ1413

Base Code: CJ14
Available in Sizes 34-54

The Alderney

Originally, the Guernsey was the traditional jumper worn by island fisherman, regardless of which Island they came from. When Channel Jumper was established in 1976, the intention was to revive the Alderney sweater, a unique variation of the Guernsey with the Alderney Lion holding a sprig knitted into the front of the jumper. This was in keeping with the Island's coat of arms.

Looking back at the time that the original Alderney jumper first came into being, many other knitting patterns were also in use. The unique design of our Alderney incorporates both the original features of the Alderney plus additional patterns relating to the time of its conception. This distinguishes it even more so from the traditional Guernsey.

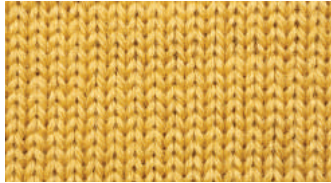


Alderney Emblem and Detailing

2022 Collection



Cinnamon - CJ



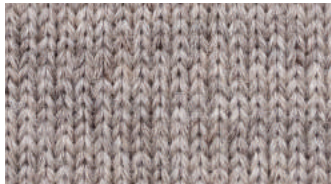
Sunflower - CJ



Kielder - CJ1021



Burgundy - CJ1022



Oatmeal - CJ1022

Base Code CJ10
Available in Sizes 38-52

More colours
available on demand



Alderney
Kielder
CJ1021



Alderney
Oatmeal
CJ1021



Jersey

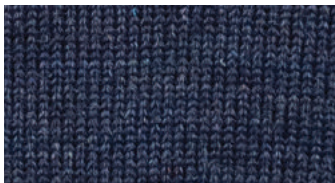
Denim

CJ1119

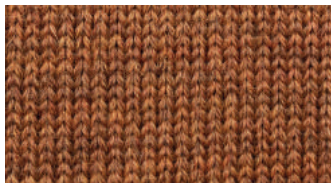
The Jersey

Based on the original pattern for a Guernsey, a Jersey is identified by the pattern of an anchor knitted in relief almost like a crest and a crew neck collar.

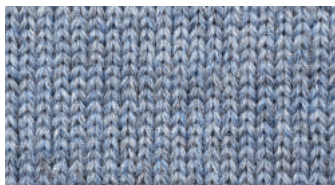
2022 Collection



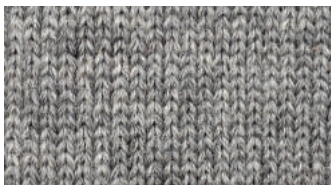
Denim - CJ1119



Cinnamon - CJ1123



Kielder - CJ1131



Smoke - CJ1124

Base Code: CJ11
Available in Sizes 38-52

More colours
available on demand



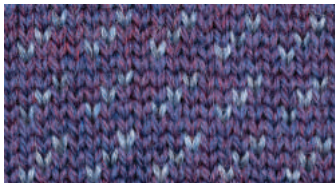
Zig Zag
Heather / Kielder
CJ0701

Zig Zag

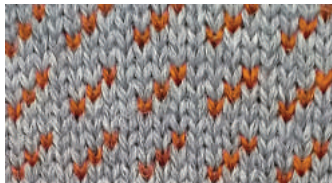
The Jacquard
Crew-neck Jumper

Base Code: CJ07
Available in Sizes S-XXL

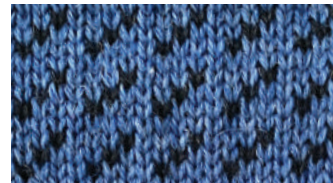
2022 Collection



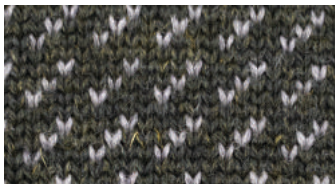
Heather / Kielder - CJo701



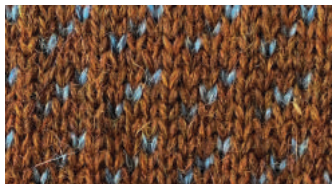
Smoke / Burt Orange- CJo702



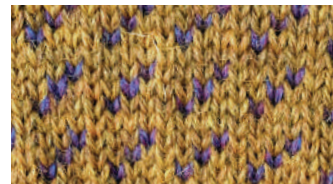
Indigo / Dark Navy- CJo703



Loden / Smoke - CJo704



Cinnamon / Summer Storm - CJo705



Harvest / Heather - CJo706



Cobbles

Heather

CJ0805

Cobbles

The Checkered
Crew-neck Jumper

Base Code. CJ08
Available in Sizes S-XXL

More colours
available on demand



Braye
Apple Green
CJ0301

Braye

The Chevron
Crew-neck Jumper

Base Code. CJ03
Available in Sizes S-XXL

More colours
available on demand



Corblets

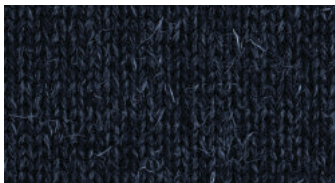
The Quarter-Zip
Guernsey Jumper

Corblets

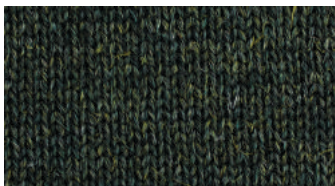
Loden Green

CJO423

2022 Collection



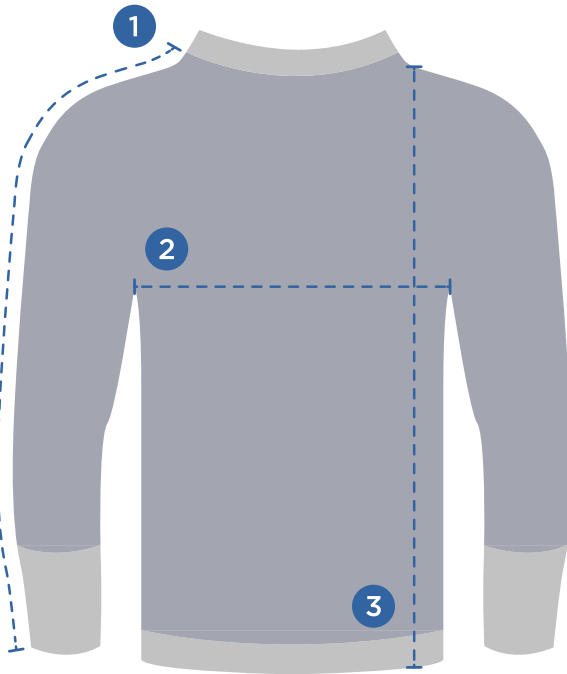
Dark Navy - CJo402



Loden Green - CJo423

Base Code: CJo4
Available in Sizes 34-56





-
- 1** Sleeve Length **2** Chest **3** Height

FINDING THE PERFECT FIT

Take a jumper that you currently own and like the fit of (some people prefer their jumpers loose, others tight) and lay it on a flat surface. Measure the width of the jumper below the arms in inches. Then double this measurement to determine your size.

Even if you already have a Guernsey, we still recommend customers to remeasure as Guernseys can last so many years and may grow ever so slightly with use. If the current fit is how you like to wear the jumper then this is what should be measured.

Burhou	34	36	38	40	42	44	46	48	50	52	54	56
Casquets	34	36	38	40	42	44	46	48	50			
Ellis	34	36	38	40	42	44	46	48	50			
Puffin	34	36	38	40	42	44	46	48	50	52	54	
Alderney			38	40	42	44	46	48	50	52		
Jersey			38	40	42	44	46	48	50	52		
Corblets	34	36	38	40	42	44	46	48	50	52	54	56
Zig Zag			S		M		L		XL		XXL	
Cobbles			S		M		L		XL		XXL	
Braye			S		M		L		XL		XXL	

Size	S			M			L			XL		XXL	
	34	36	38	40	42	44	46	48	50	52	54	56	
Chest (flat)	17" 43 cm	18" 46 cm	19" 48 cm	20" 51 cm	21" 53 cm	22" 56 cm	23" 58 cm	24" 61 cm	25" 64 cm	26" 66 cm	27" 69 cm	28" 71 cm	
Body Length	26" 66 cm	27" 69 cm	27" 69 cm	27" 69 cm	28" 71 cm	28" 71 cm	29" 74 cm	29" 74 cm	29" 74 cm	30" 76 cm	30" 76 cm	31" 79 cm	
Sleeve Length	24" 61 cm	24" 61 cm	25" 63.5 cm	25" 63.5 cm	27" 68.5 cm	27" 68.5 cm	28" 71 cm	28" 71 cm	29" 73.5 cm	29" 73.5 cm	30" 76 cm	31" 79 cm	



Channel Jumper Ltd
Braye Harbour
Alderney, GY9 3XX
Bailiwick of Guernsey
Channel Islands

+44 1481 822 202
info@channeljumper.com

CHANNELJUMPER.COM